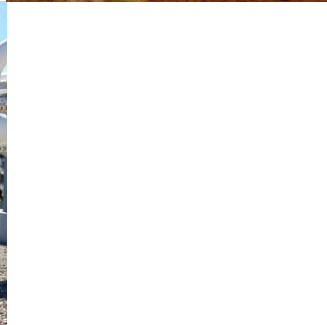
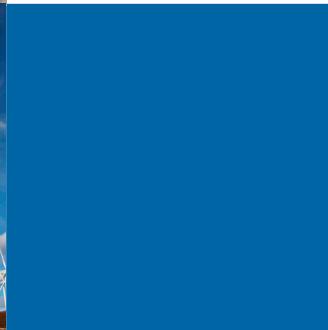
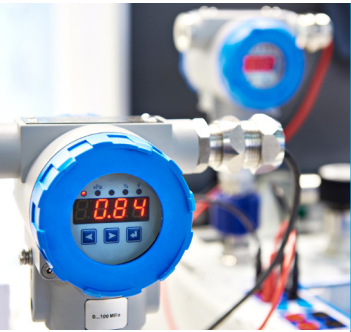




Helping People  
Measure, Control & Calibrate

## Representation Products Line Card



Covering Northern California & Northern Nevada

Data Acquisition, Flow, Gas Analysis, Level, Load,  
Moisture, Pressure, Safety, Temperature, Vibration, Water Analysis

# REPRESENTATION PRODUCTS



## Advanced Energy



- Mikron Thermal Imaging Systems & Solutions
- Impac Pyrometers
- Thyro SCR Power Controllers



## Binder



- Dynamic Climate Chambers
- Drying and Heating Chambers
- Incubators



## Data Physics



- Dynamic Signal Analyzers
- Vibration Controllers
- Shakers & Accessories



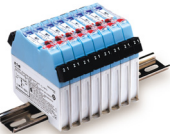
## Dytran Instruments



- Piezoelectric & DC MEMS Accelerometers
- Piezo Pressure & Force Sensors
- Electronics & Rugged Cables



## Eaton MTL



- IS Barriers & Isolators
- Surge Protection
- Annunciators, Event Recorders



## FLOMEC



- Low Cost Turbine and Oval Gear Flow
- Low Cost Electromagnetic Flow Meters
- Low Flow Ultrasonic Insertion Flow Meters



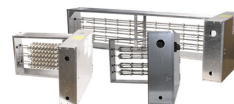
## Gantner Instruments



- Measurement and Control DAQ Solutions



## Indeeco - Heatrex - Accutherm



- Finned & Tubular Heating Element
- Process & HVAC Duct Heaters
- Immersion & Enclosure Heaters



Helping People  
Measure, Control & Calibrate



## Mettler



- Heating/Drying & Vacuum Ovens
- Environmental Chambers & Incubators
- Water baths



## Mensor - DH Budenberg



- Portable Digital Pressure Gauges
- Precision Pressure Controllers & Deadweight Testers



## Sensidyne



- Fixed Point Gas Detection
- Gas Detection Controllers
- Fire & Flame Detection



## Teledyne Hastings Instruments



- Mass Flow Controllers and Meters
- Vacuum Gauge Tubes
- Vacuum Measurement & Control



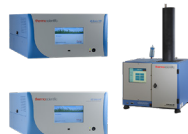
## Texys Group / Fogale Sensors



- Sensors- Pressure, Temperature, Speed, Optical, Inertial, Instrumented Bolts, Customs Sensors, Signal Conditioning & Wireless Sensors
- Precision Position- Nuclear, Construction Monitoring, Space, Robotics & Turbine Blade



## Thermo Scientific - Air Quality



- Air Quality Analysis & Sample Measurement
- Ambient & Source Gas Monitoring
- Ambient Particulate Monitoring



## Thermo Scientific - Water Analysis



- Orion Online ISE & Colorimetric Analyzers
- Aquasensors Sensors & Transmitters
- Orion Laboratory Benchtop Meters, Electrodes and Solutions



## Wika Sensor Technology



- Load Beam / Shear Beam Load Cells
- Compression Force & Ring Force Load Cells
- Pressure Transducers & Custom Engineered Products For OEM Applications

## ALSO REPRESENTED

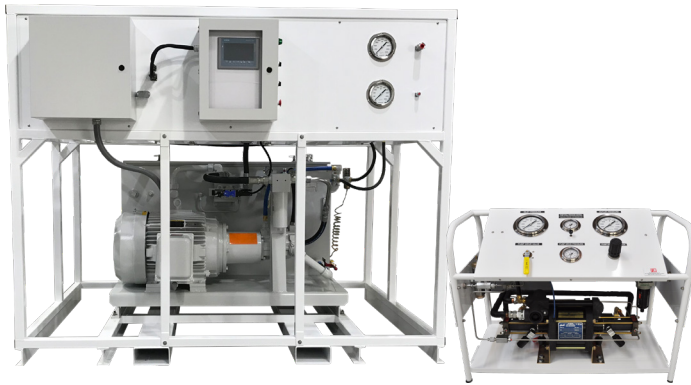


## SYSTEMS

FLW can engineer and custom build small to large PLC / PC controlled systems for a wide range of industries and applications.

Standard & custom built systems include:

- ✓ Portable pressure test packs
- ✓ Pressure and flow test benches
- ✓ ATE turnkey solutions
- ✓ Systems for OEM



## LOCATIONS

### Southern California

5672 Bolsa Ave  
Huntington Beach, CA 92649  
tel (800) 576-6308  
fax (714) 622-2001

### Rocky Mountain Region

6860 Argonne Street, Unit C  
Denver, CO 80249  
tel (800) 238-7400  
fax (303) 789-0131

### Satellite Offices

Novato, CA  
Portland, OR

Salt Lake City, UT  
San Diego, CA

## SERVICE & CALIBRATION

In addition to carrying over 40 top physical measurement, control & calibration brands, FLW can service and calibrate most of the brands we sell. FLW Southern California operates an ISO 17025 accredited environmentally controlled calibration laboratory. On-site services and free pick-up & delivery are also available for Southern California customers.

- ✓ Pressure From Vacuum to 40,000 PSI \*
- ✓ Temperature & Relative Humidity \*
- ✓ Dimensional / Linear Measurement
- ✓ DC/Low Frequency Electronics \*
- ✓ Force & Load Up To 1000 lbf
- ✓ Torque Tooling Up to 1000 ft-lbs
- ✓ Ashcroft & WIKA Certified Diaphragm Seal Assembly



Helping People  
Measure, Control & Calibrate